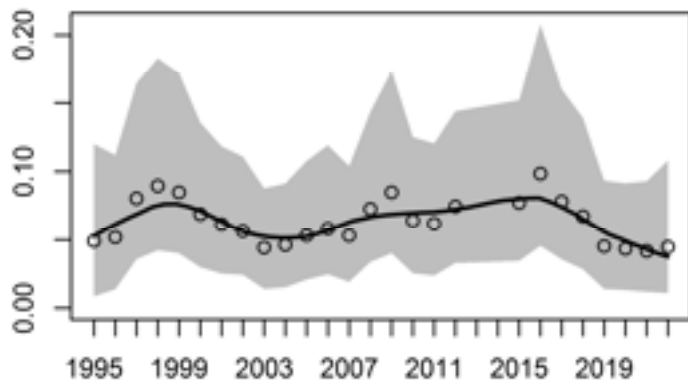


Trend Analysis Charts – Fall 2022

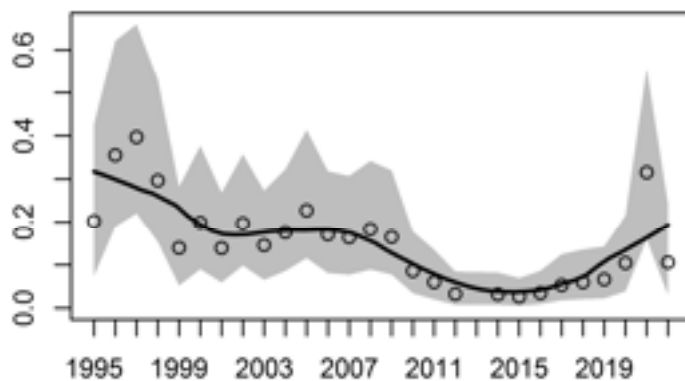
**Open circles represent annual abundance index estimates,
Line represents smooth Loess-curve,
Gray area indicates 95% confidence interval**

Annual abundance index (average captures p. day)

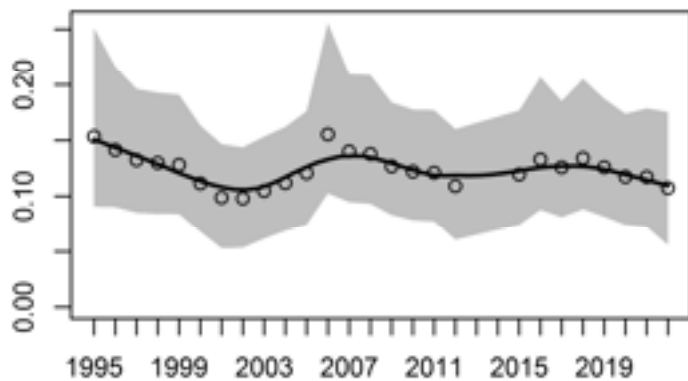
Sharp-shinned Hawk
-0.11%/year, $p=0.95$



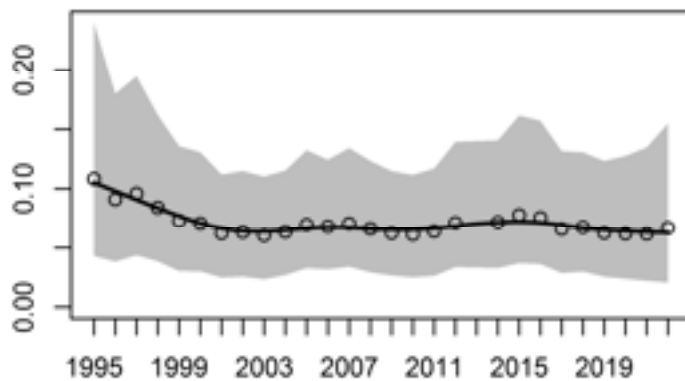
Solitary Sandpiper
-3.49%/year, $p=0.71$



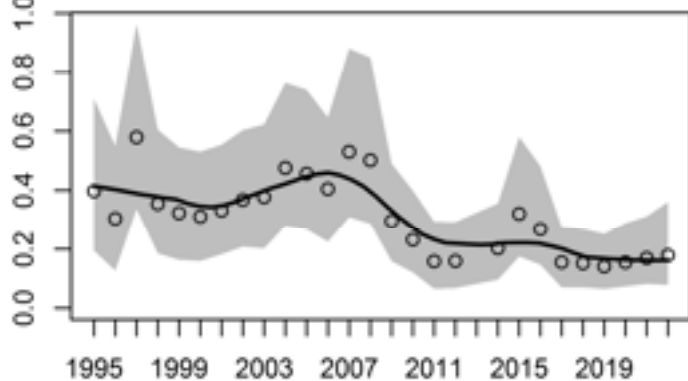
Belted Kingfisher
-0.84%/year, $p=0.82$



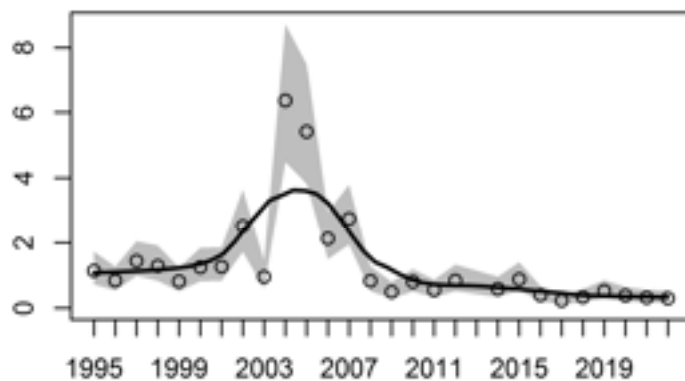
Olive-sided Flycatcher
-1.92%/year, $p=0.69$



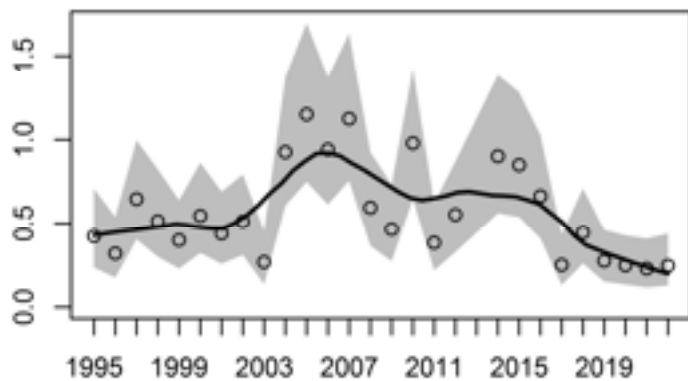
Western Wood-Pewee
-2.74%/year, $p=0.61$



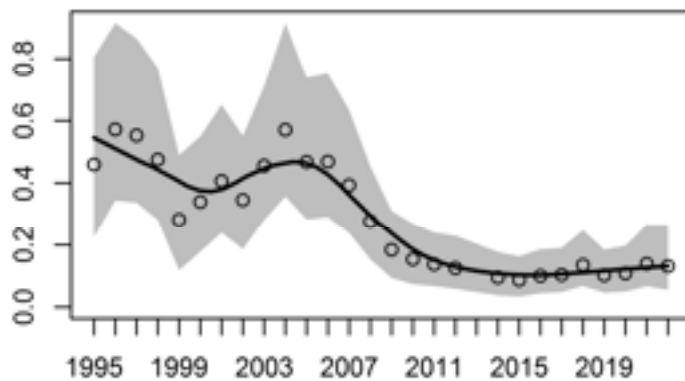
Trail's Flycatcher
-5.90%/year, $p=0.12$



Least Flycatcher
-1.99%/year, $p=0.61$



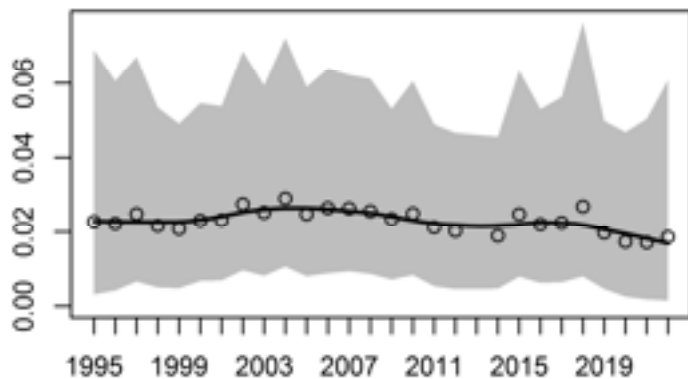
Eastern Kingbird
-5.37%/year, $p=0.31$



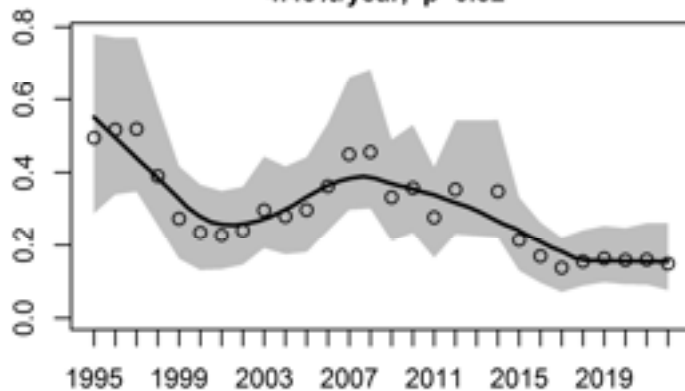
Year

Annual abundance index (average captures p. day)

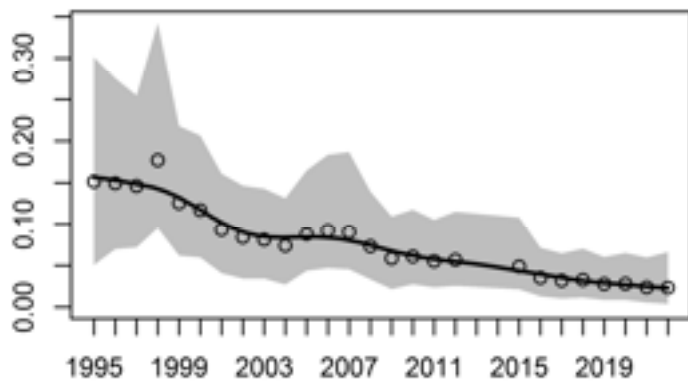
Blue-headed Vireo
-1.35%/year, $p=0.86$



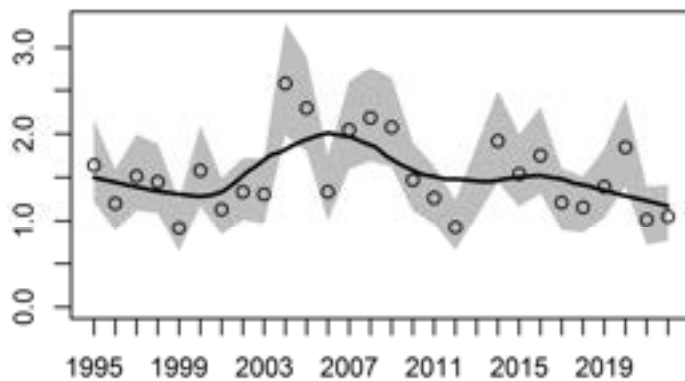
Warbling Vireo
-4.43%/year, $p=0.32$



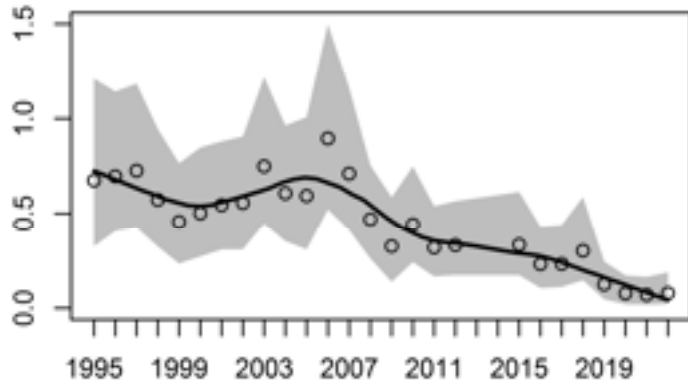
Red-eyed Vireo
-7.23%/year, $p=0.20$



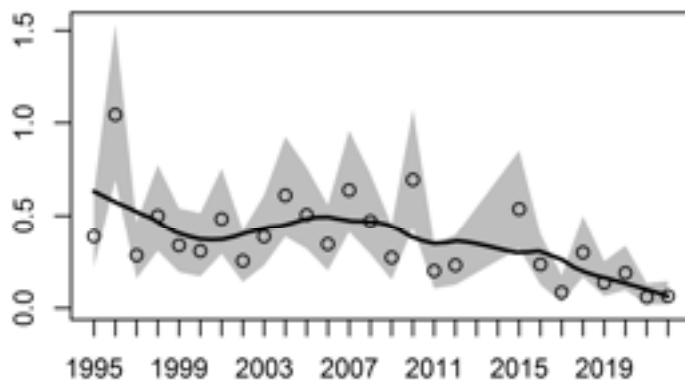
House Wren
-0.96%/year, $p=0.21$



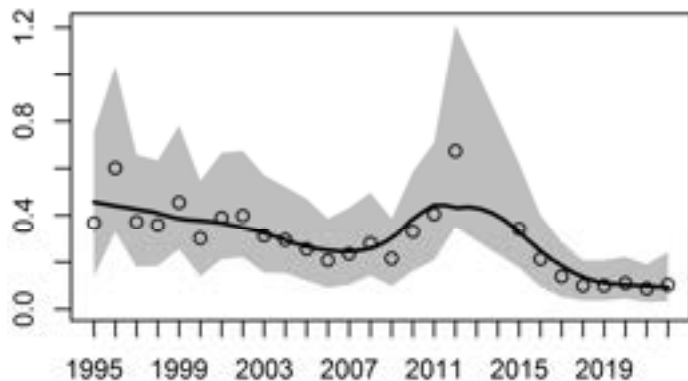
Ruby-crowned Kinglet
-7.41%/year, $p=0.19$



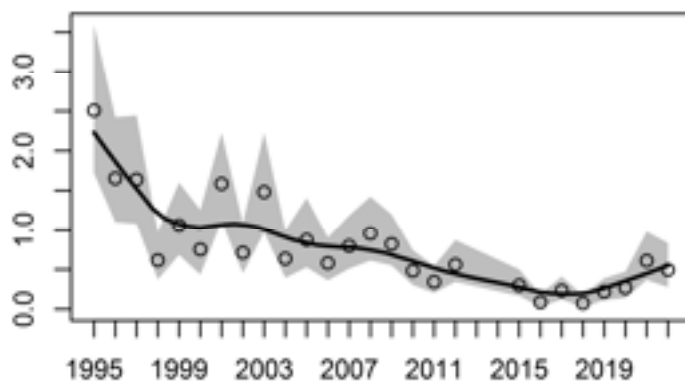
Swainson's Thrush
-7.10%/year, $p=0.13$



Hermit Thrush
-7.42%/year, $p=0.20$



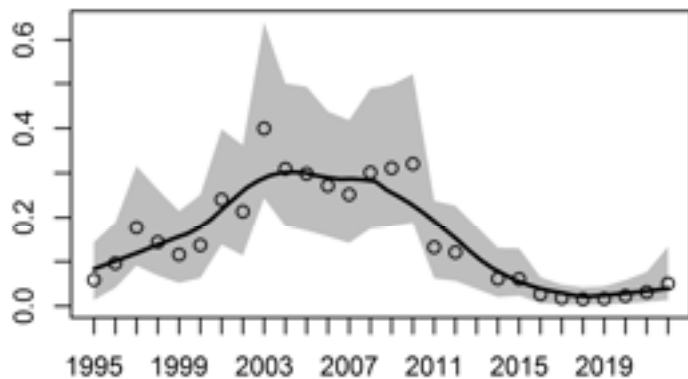
American Robin
-7.67%/year, $p=0.06$



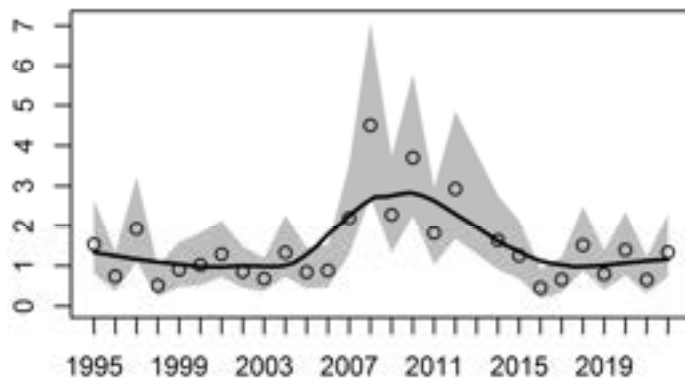
Year

Annual abundance index (average captures p. day)

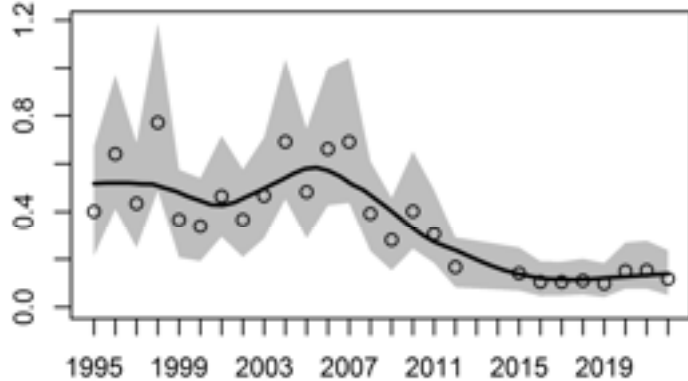
Gray Catbird
-3.13%/year, $p=0.72$



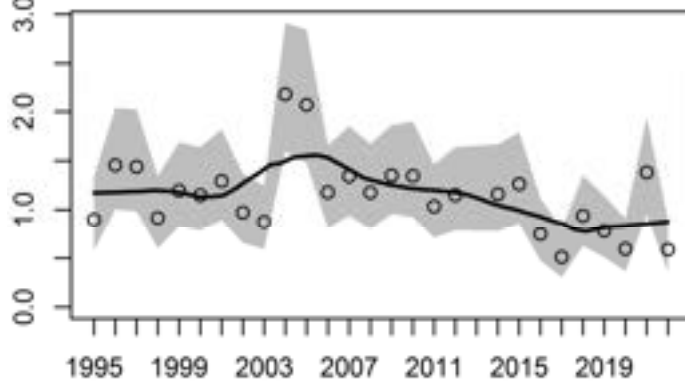
Cedar Waxwing
0.84%/year, $p=0.71$



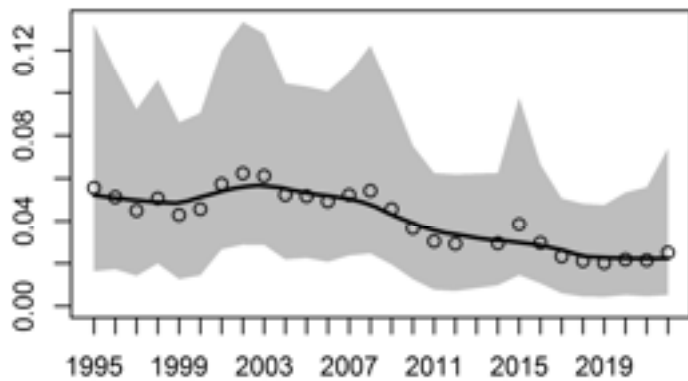
Ovenbird
-5.63%/year, $p=0.31$



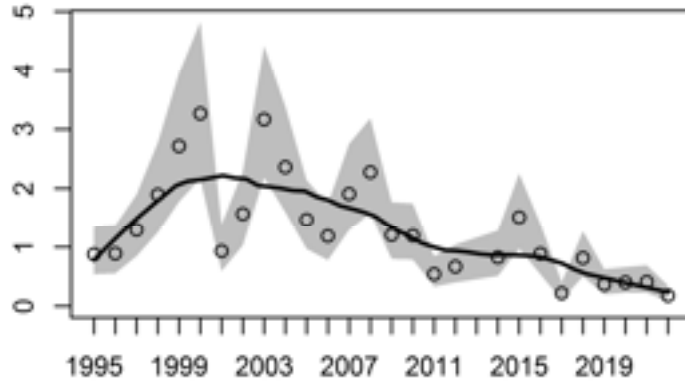
Northern Waterthrush
-2.00%/year, $p=0.19$



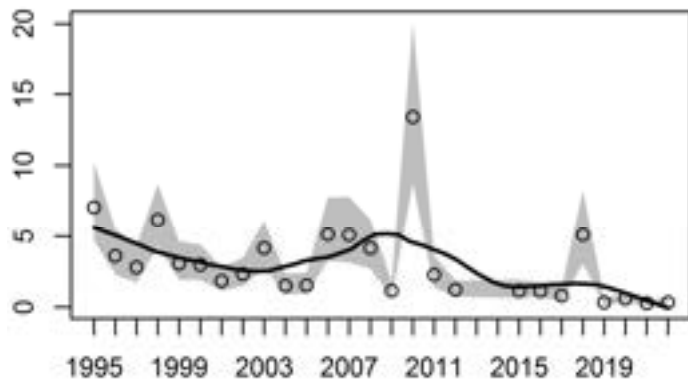
Black-and-white Warbler
-3.04%/year, $p=0.60$



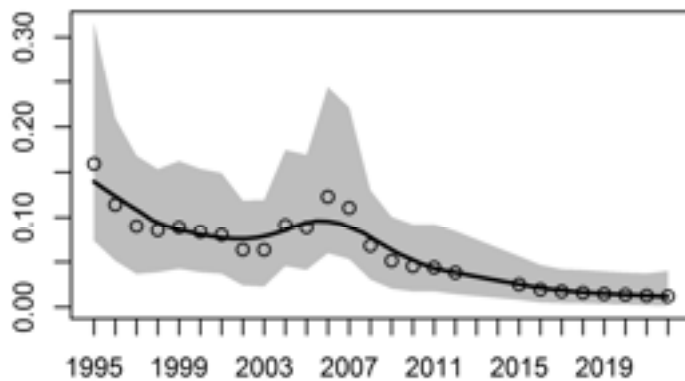
Tennessee Warbler
-6.56%/year, $p=0.04$



Orange-crowned Warbler
-8.58%/year, $p<0.001$



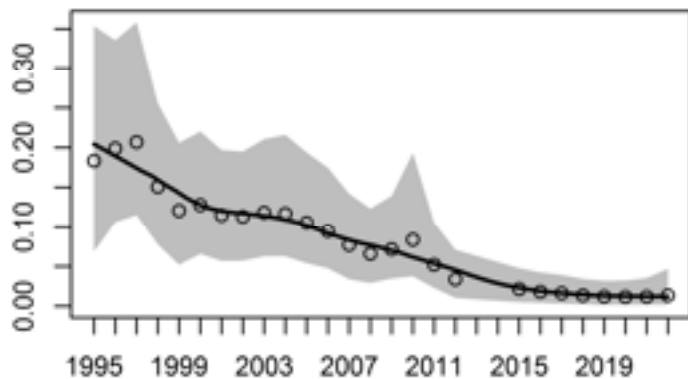
Connecticut Warbler
-11.25%/year, $p=0.10$



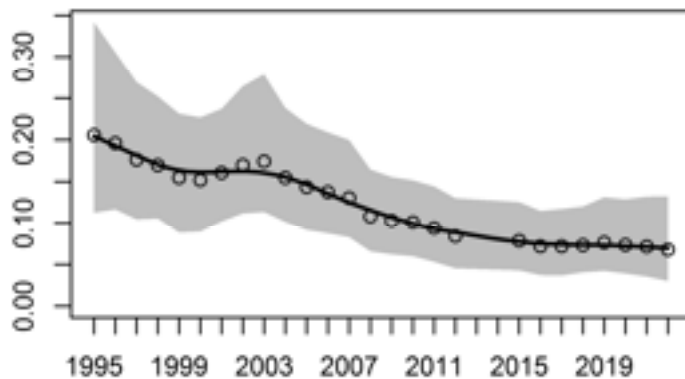
Year

Annual abundance index (average captures p. day)

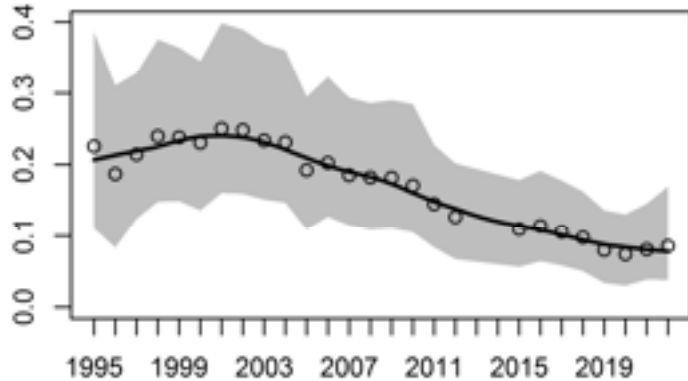
MacGillivray's Warbler
-11.47%/year, p=0.09



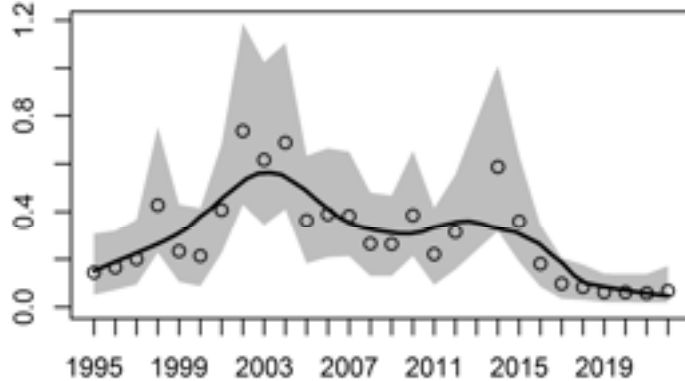
Mourning Warbler
-4.16%/year, p=0.21



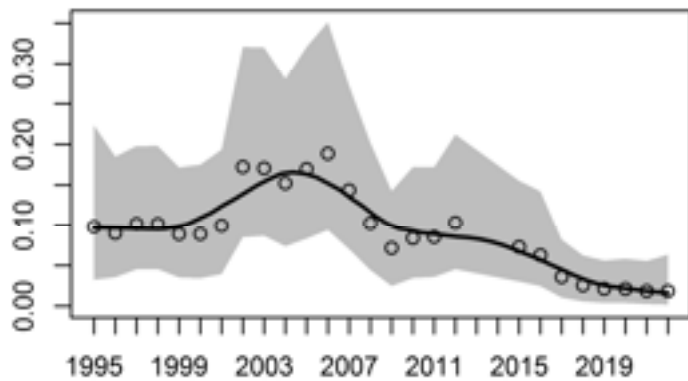
Common Yellowthroat
-3.86%/year, p=0.32



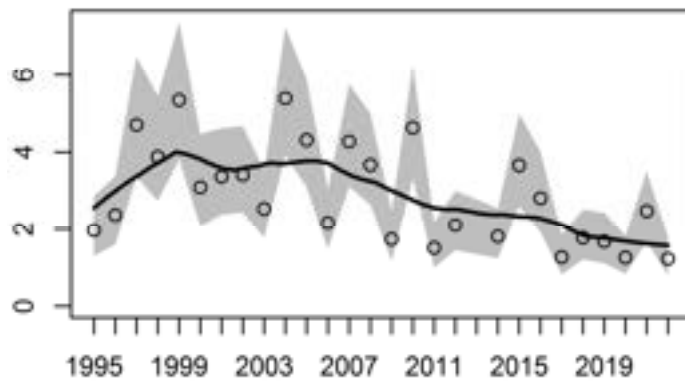
American Redstart
-2.95%/year, p=0.71



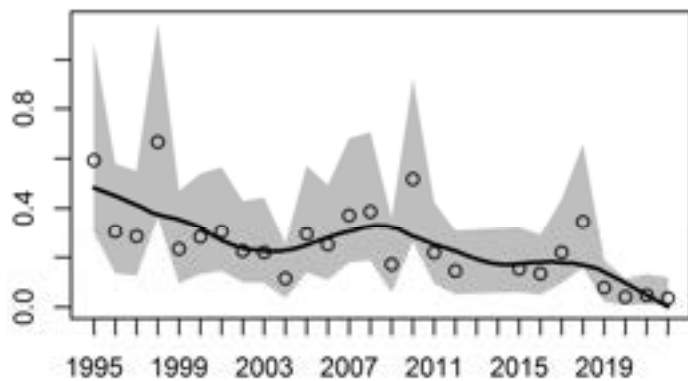
Magnolia Warbler
-7.93%/year, p=0.29



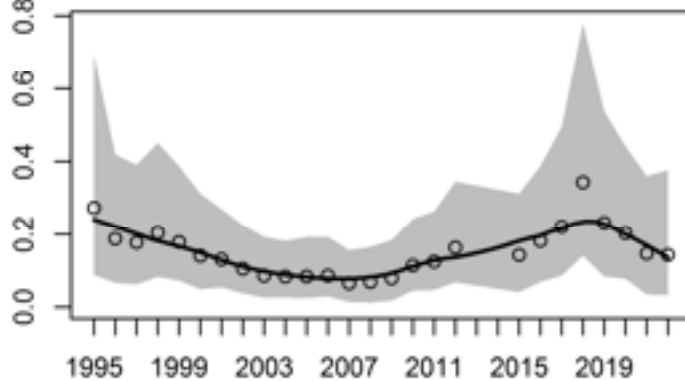
Yellow Warbler
-2.27%/year, p=0.26



Blackpoll Warbler
-9.57%/year, p=0.23



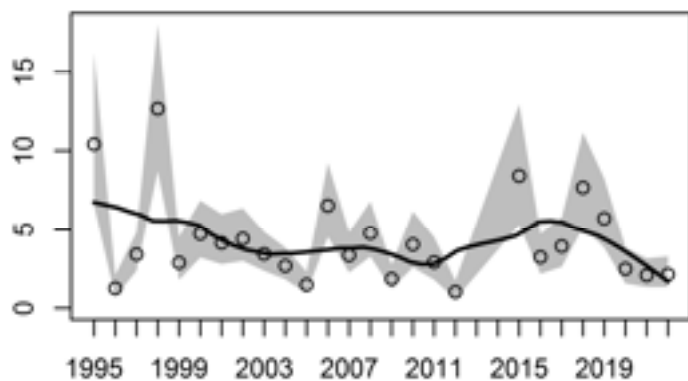
Palm Warbler
-2.50%/year, p=0.76



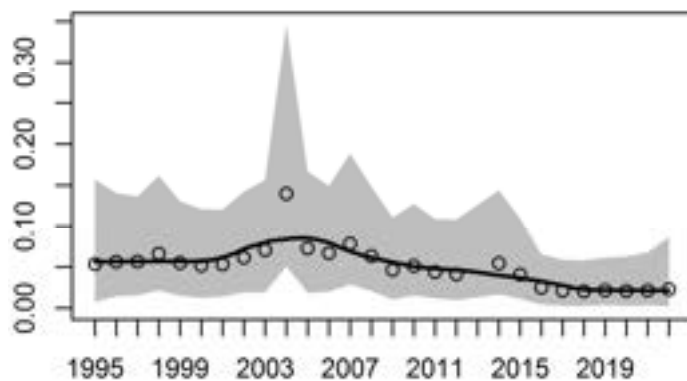
Year

Annual abundance index (average captures p. day)

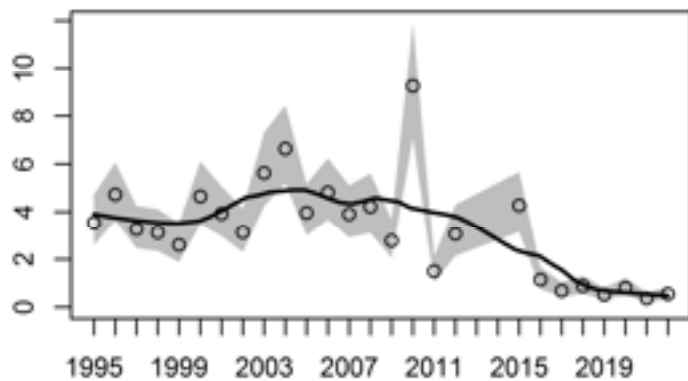
Yellow-rumped Warbler
-0.84%/year, $p=0.74$



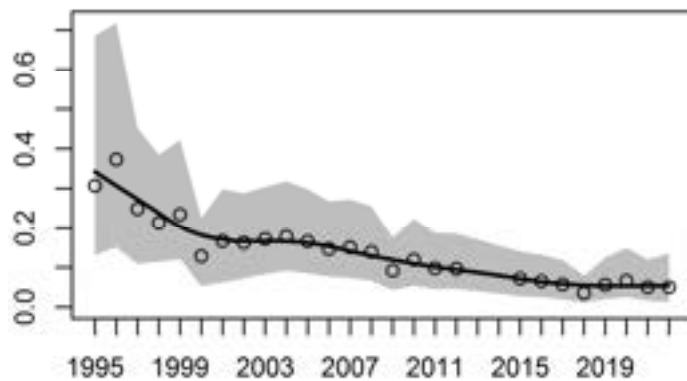
Canada Warbler
-3.19%/year, $p=0.68$



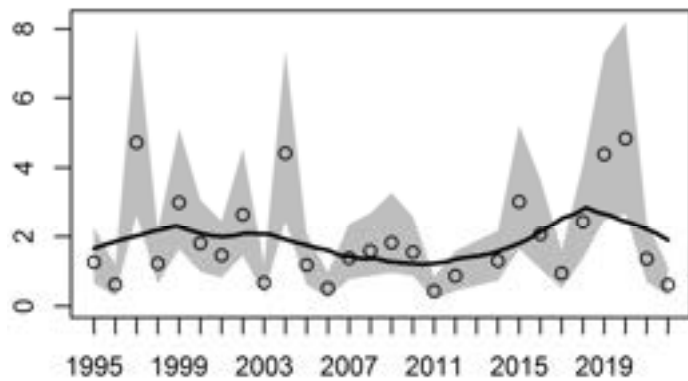
Wilson's Warbler
-7.76%/year, $p=0.01$



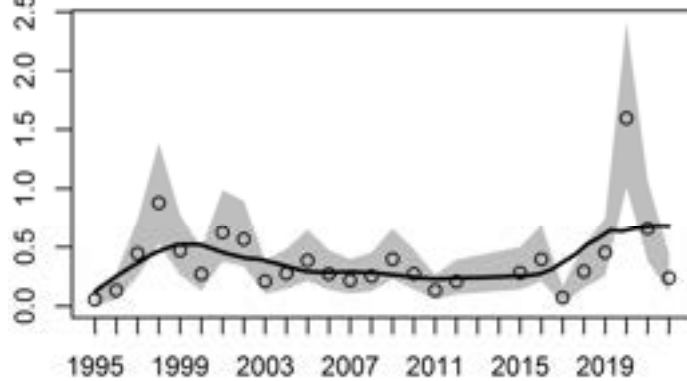
American Tree Sparrow
-9.30%/year, $p=0.07$



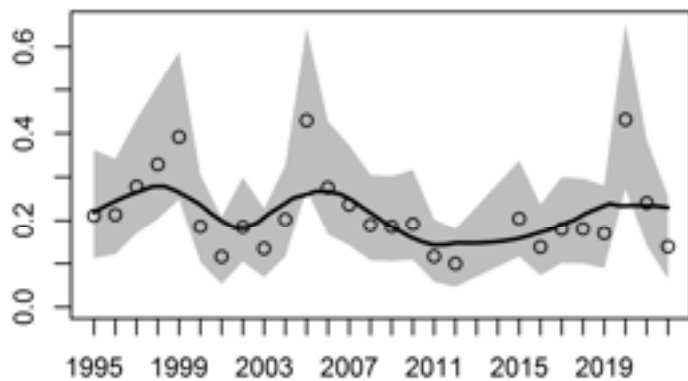
Chipping Sparrow
0.47%/year, $p=0.80$



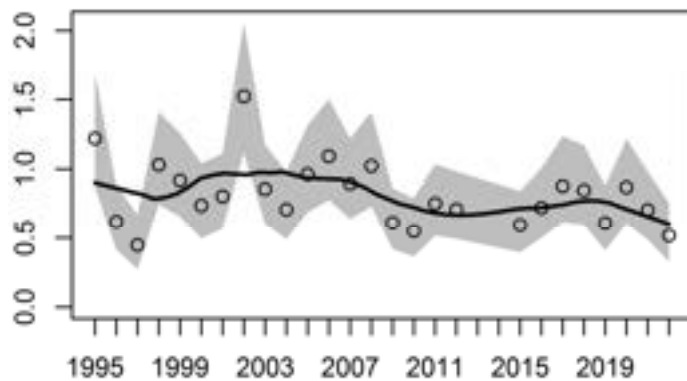
Clay-colored Sparrow
4.29%/year, $p=0.58$



Song Sparrow
-0.02%/year, $p=0.98$



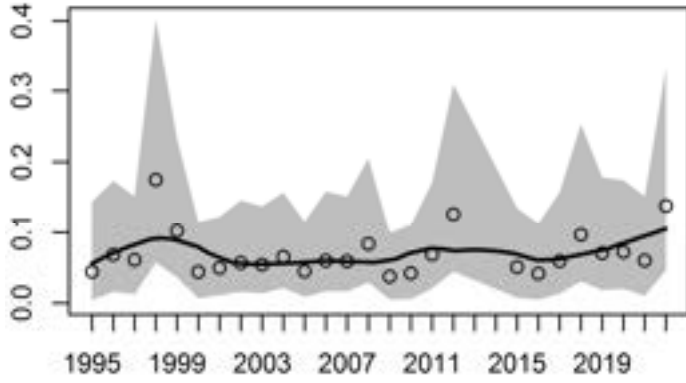
Lincoln's Sparrow
-1.18%/year, $p=0.64$



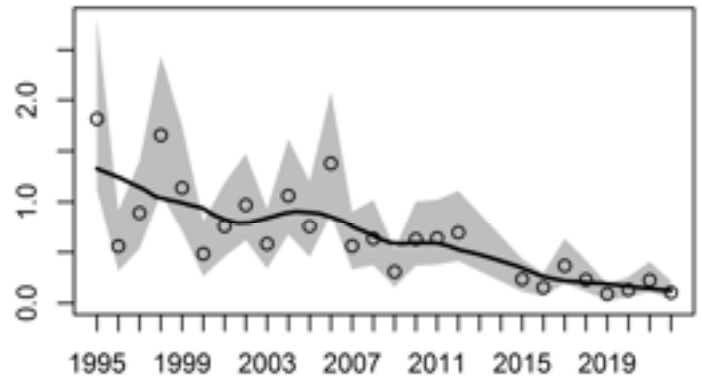
Year

Annual abundance index (average captures p. day)

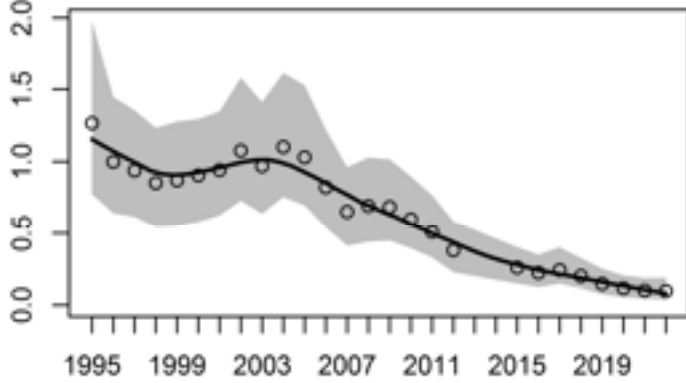
Swamp Sparrow
0.10%/year, $p=0.99$



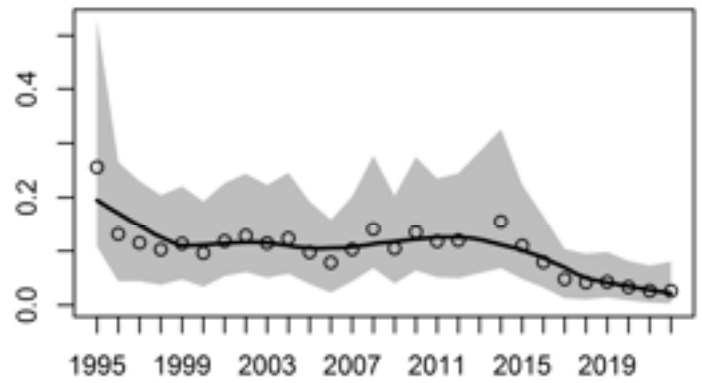
White-throated Sparrow
-8.47%/year, $p=0.03$



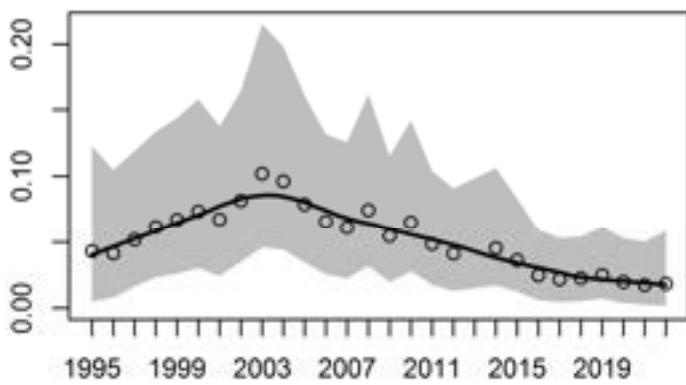
White-crowned Sparrow
-9.57%/year, $p=0.01$



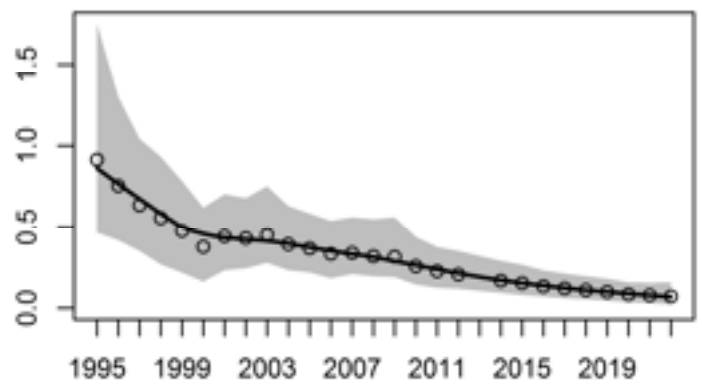
Western Tanager
-8.36%/year, $p=0.25$



Rose-breasted Grosbeak
-3.23%/year, $p=0.63$



Baltimore Oriole
-9.50%/year, $p=0.02$



Year