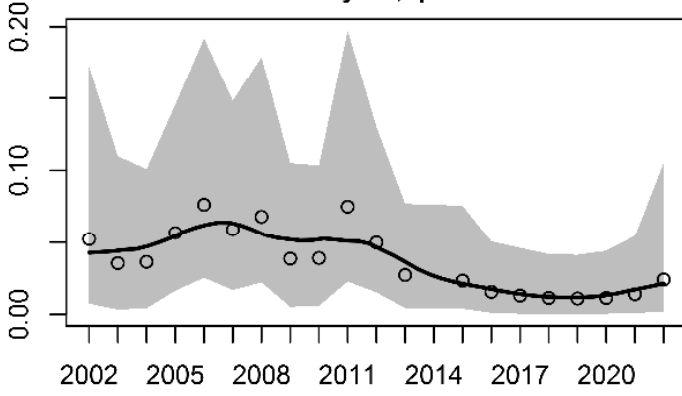


## **Trend Analysis Charts – Spring 2022**

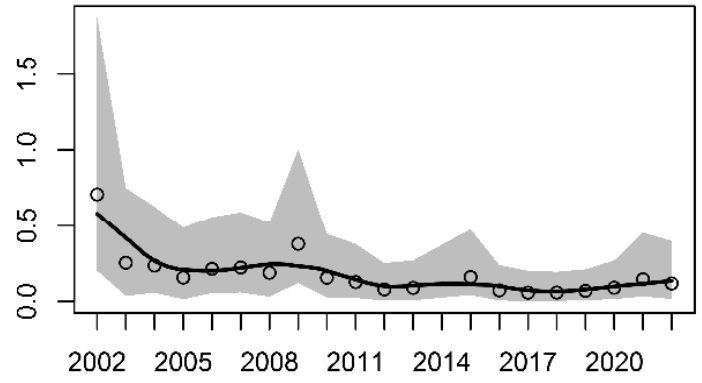
**Open circles represent annual abundance index estimates,  
Line represents smooth Loess-curve,  
Gray area indicates 95% confidence interval**

Annual abundance index (average captures p. day)

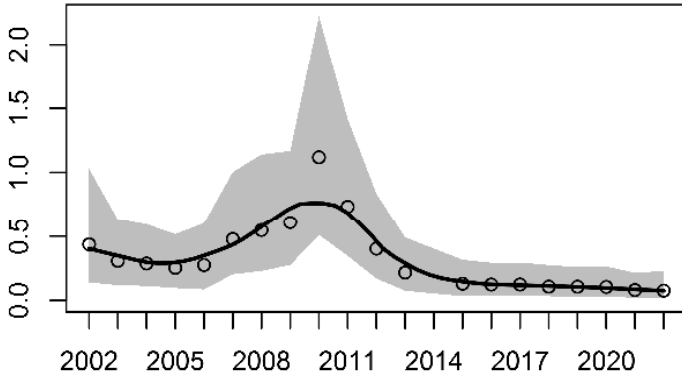
**Belted Kingfisher**  
-6.26%/year,  $p=0.62$



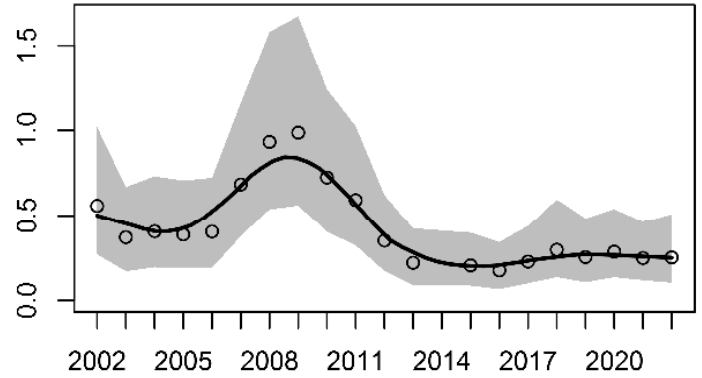
**Western Wood-Pewee**  
-8.88%/year,  $p=0.42$



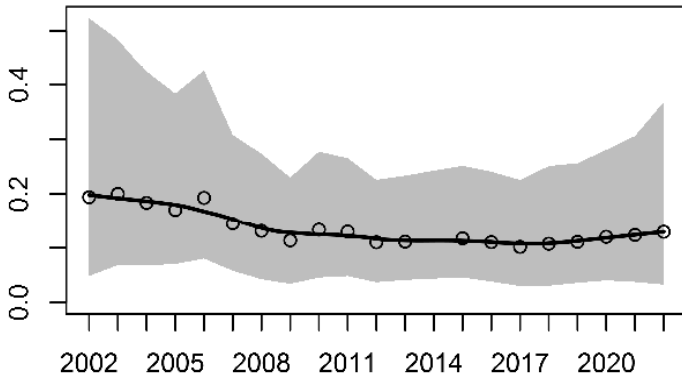
**Trail's Flycatcher**  
-10.49%/year,  $p=0.27$



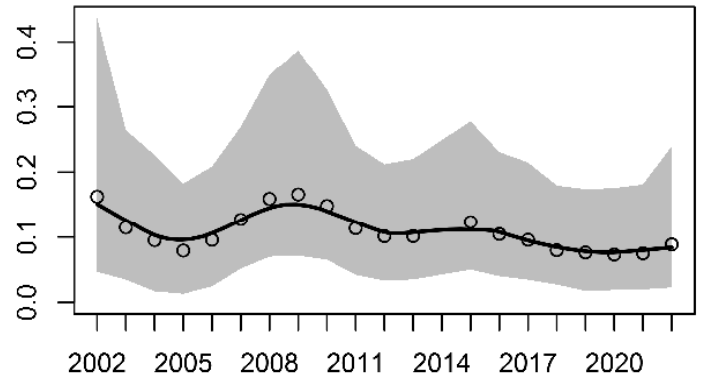
**Least Flycatcher**  
-4.59%/year,  $p=0.48$



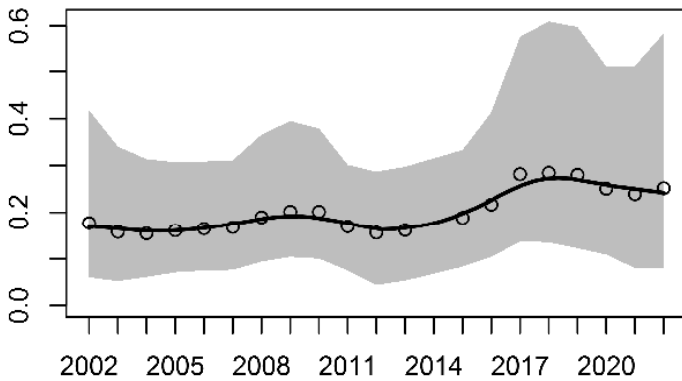
**Eastern Kingbird**  
-2.33%/year,  $p=0.71$



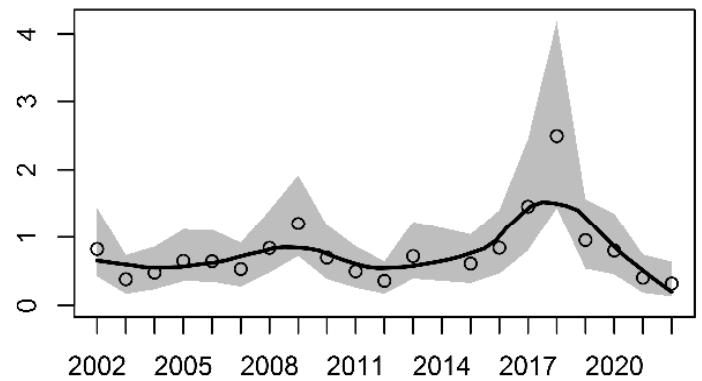
**Warbling Vireo**  
-2.66%/year,  $p=0.74$



**Northern Rough-winged Swallow**  
2.58%/year,  $p=0.64$



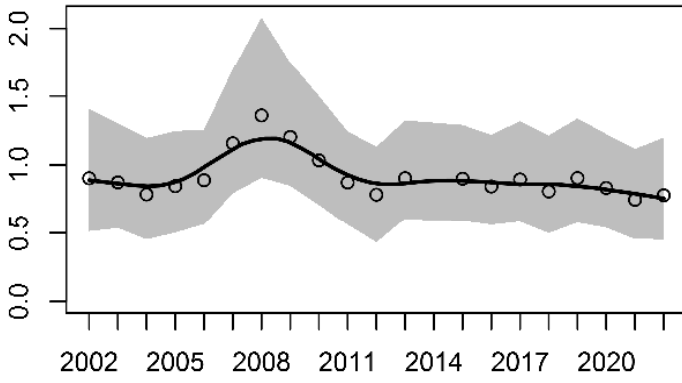
**Tree Swallow**  
-0.62%/year,  $p=0.95$



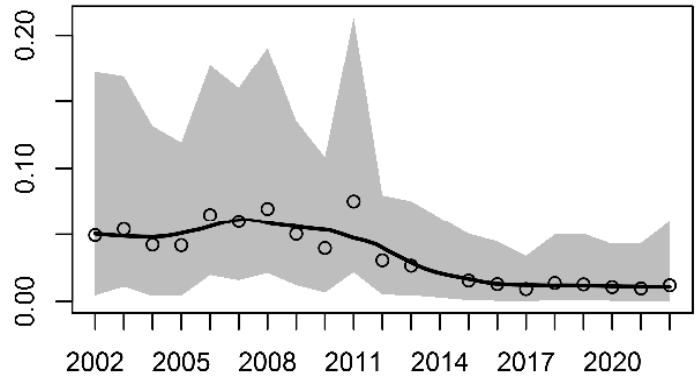
Year

Annual abundance index (average captures p. day)

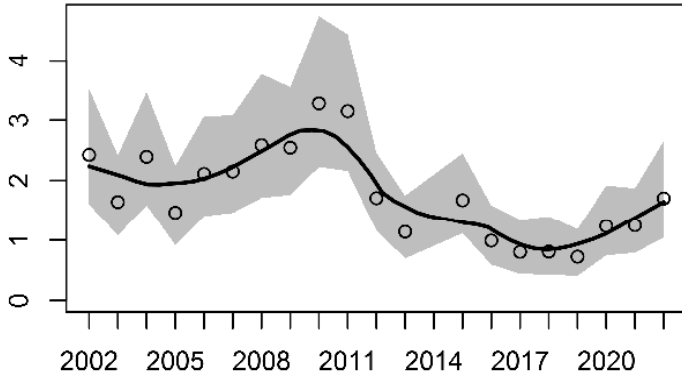
**House Wren**  
-0.94%/year, p=0.68



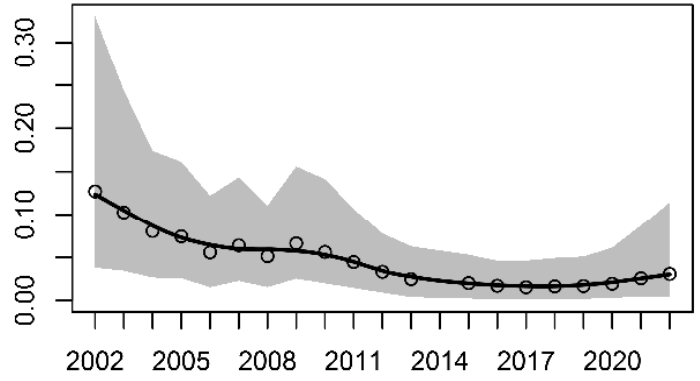
**Ruby-crowned Kinglet**  
-12.50%/year, p=0.36



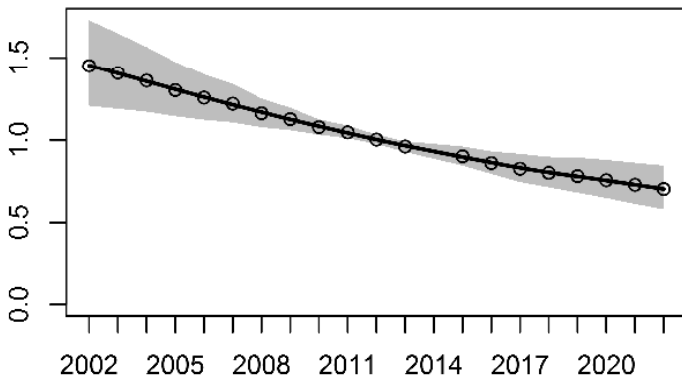
**Swainson's Thrush**  
-4.01%/year, p=0.03



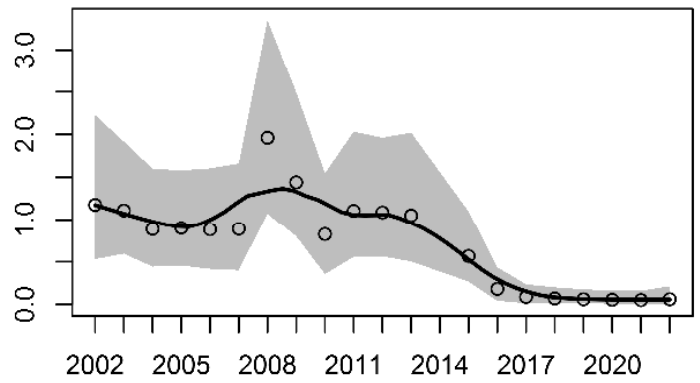
**Hermit Thrush**  
-9.04%/year, p=0.32



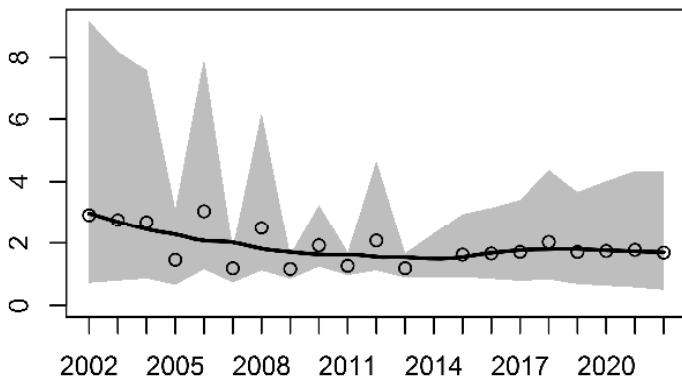
**American Robin**  
-3.61%/year, p<0.001



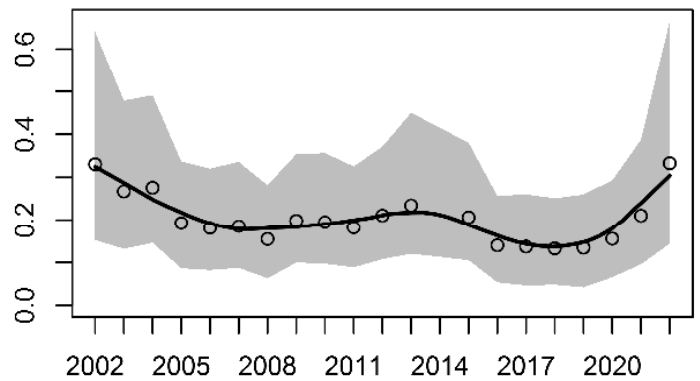
**Gray Catbird**  
-16.68%/year, p=0.06



**Cedar Waxwing**  
-0.16%/year, p=0.97



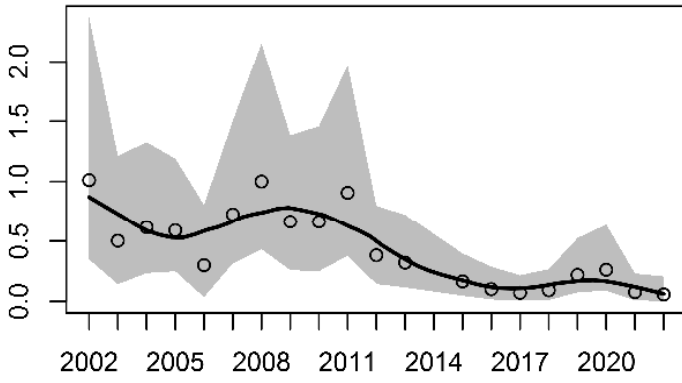
**Northern Waterthrush**  
-0.96%/year, p=0.88



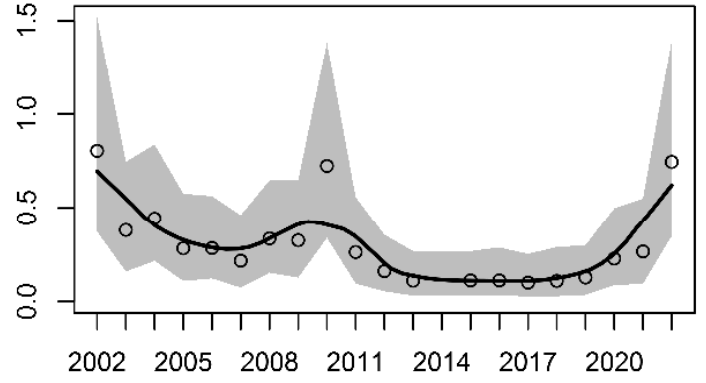
Year

Annual abundance index (average captures p. day)

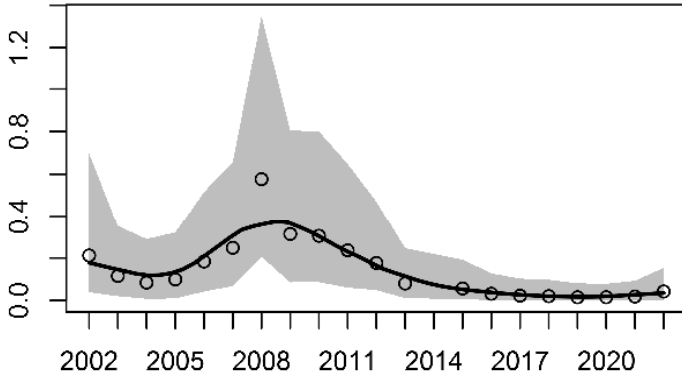
**Orange-crowned Warbler**  
-14.96%/year,  $p=0.12$



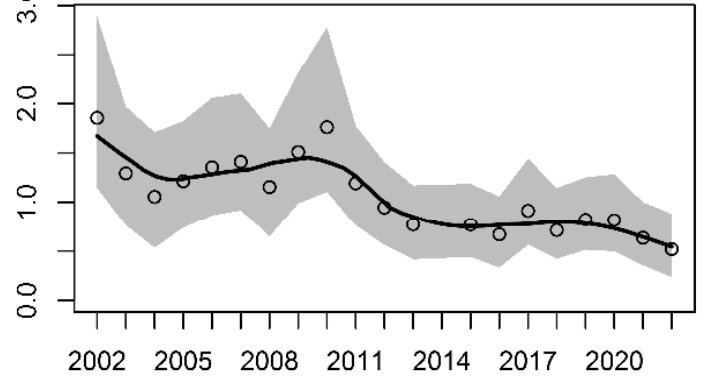
**Common Yellowthroat**  
-2.17%/year,  $p=0.80$



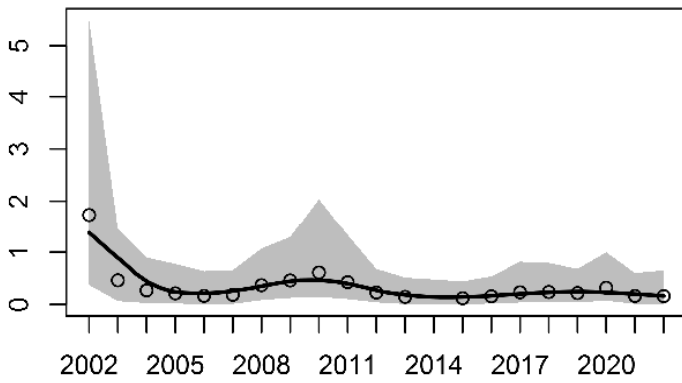
**American Redstart**  
-17.90%/year,  $p=0.25$



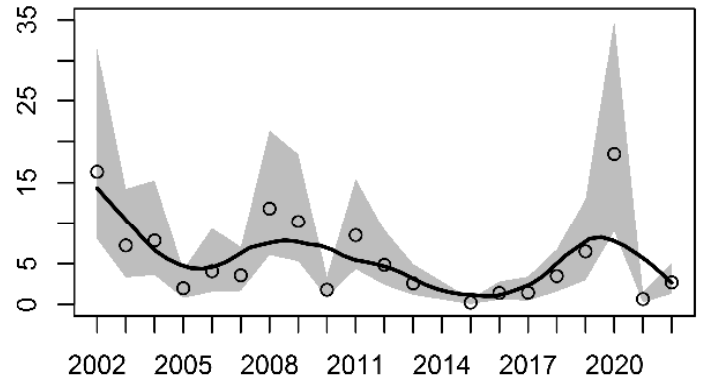
**Yellow Warbler**  
-5.36%/year,  $p=0.03$



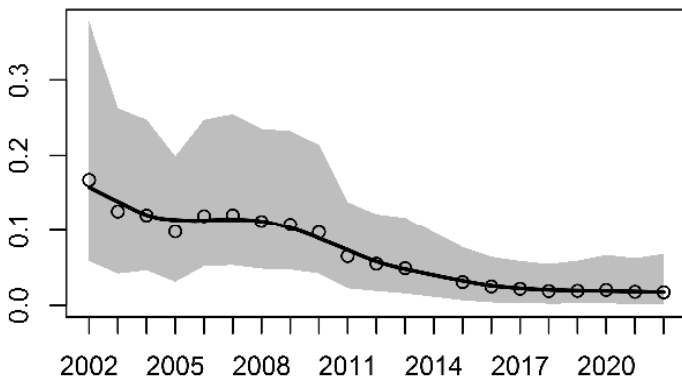
**Blackpoll Warbler**  
-10.16%/year,  $p=0.35$



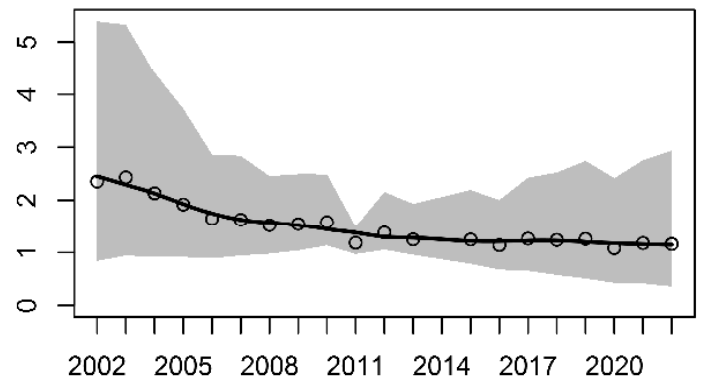
**Yellow-rumped Warbler**  
-5.88%/year,  $p=0.20$



**Wilson's Warbler**  
-13.55%/year,  $p=0.13$



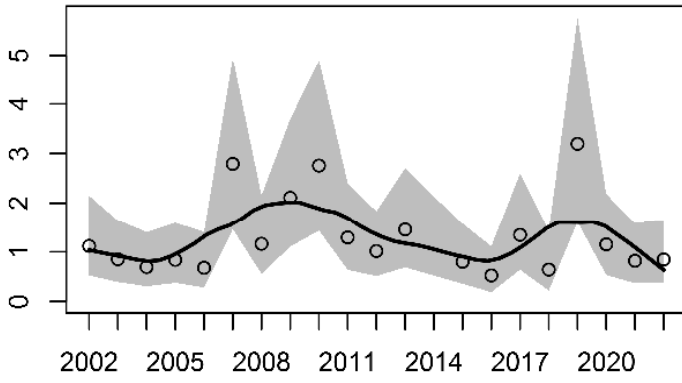
**Chipping Sparrow**  
-3.01%/year,  $p=0.50$



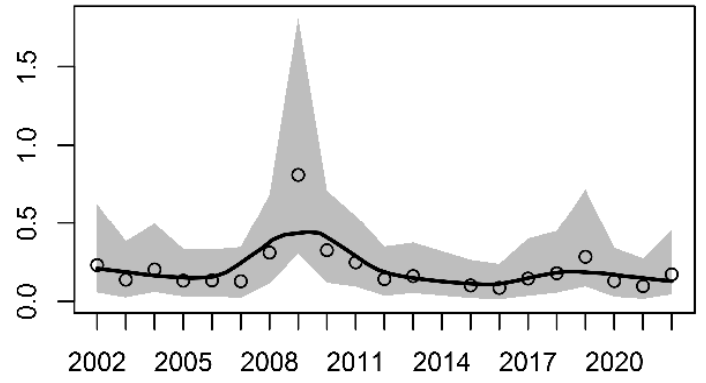
Year

Annual abundance index (average captures p. day)

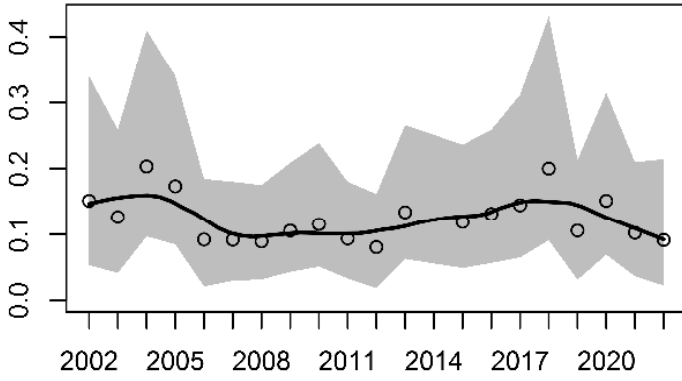
**Clay-colored Sparrow**  
-0.91%/year,  $p=0.75$



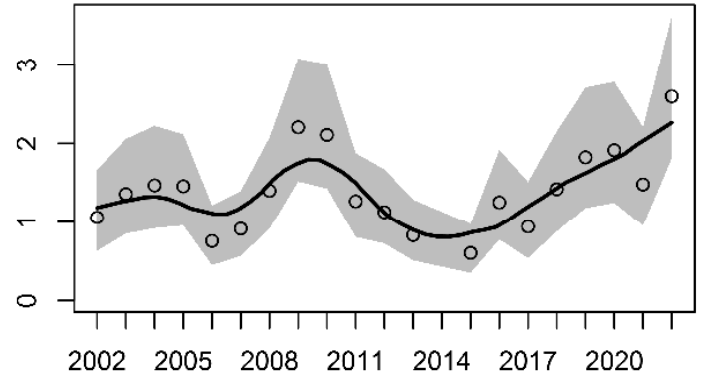
**Savannah Sparrow**  
-2.91%/year,  $p=0.80$



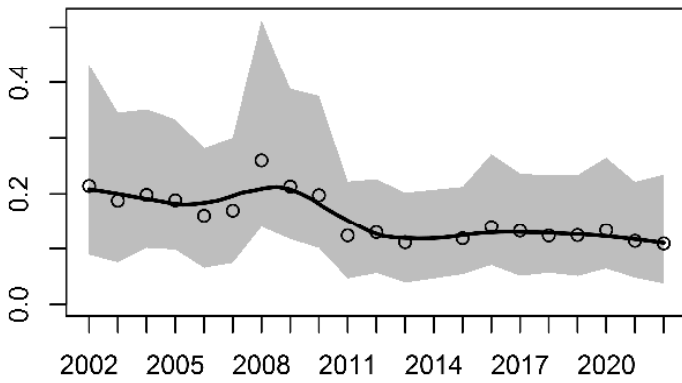
**Song Sparrow**  
-3.77%/year,  $p=0.66$



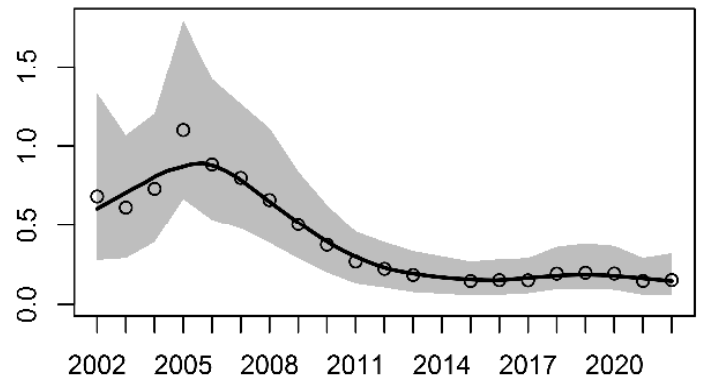
**Lincoln's Sparrow**  
2.27%/year,  $p=0.23$



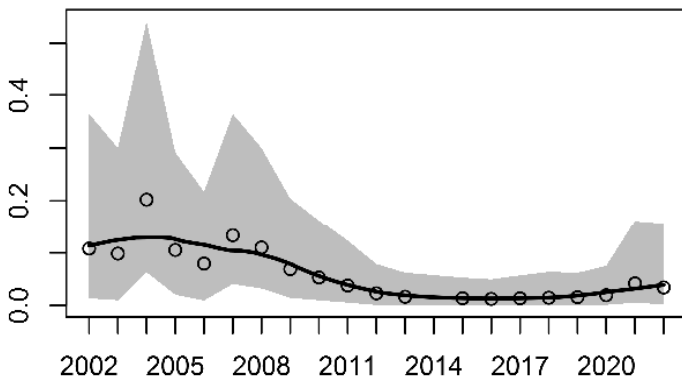
**White-throated Sparrow**  
-2.35%/year,  $p=0.69$



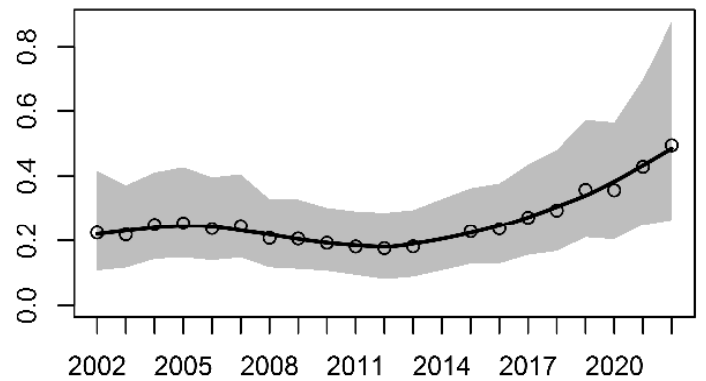
**White-crowned Sparrow**  
-8.41%/year,  $p=0.18$



**Western Tanager**  
-8.67%/year,  $p=0.54$



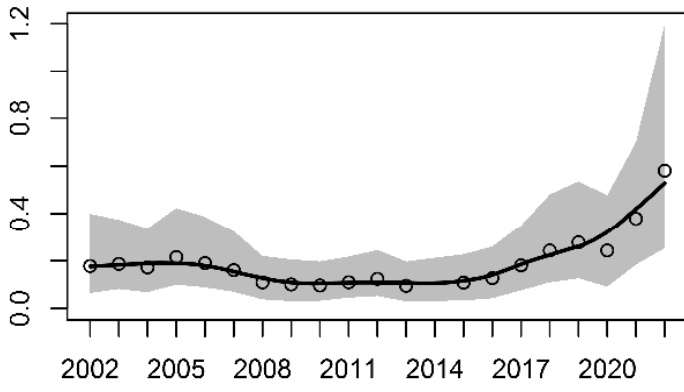
**Brown-headed Cowbird**  
4.28%/year,  $p=0.37$



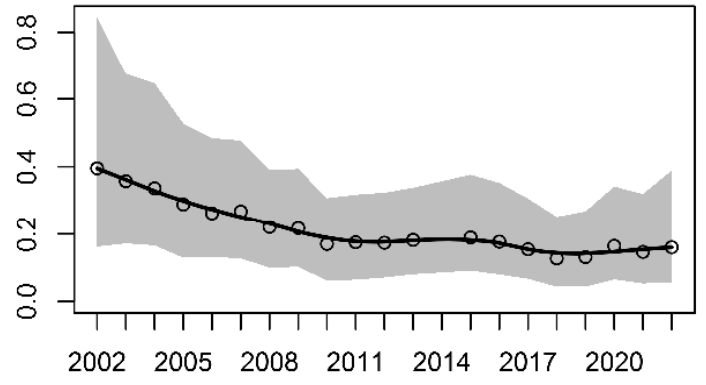
Year

Annual abundance index (average captures p. day)

**Red-winged Blackbird**  
5.65%/year, p=0.45



**Baltimore Oriole**  
-4.62%/year, p=0.38



Year